

WIGGINS

MLS
MEDALLION
MEMBER

RE/MAX

info@timwiggins.com
604-351-1920 Vancouver
250-415-2500 Victoria

Tim Wiggins and Georgia Wiggins @ RE/MAX Camosun

listings waterfront retirement in Victoria meet Tim & Georgia recent sales contact

how we sell your home "Georgia's knowledge in renovating was extremely helpful"

> next tip

Current Vancouver/Victoria Time is 11:39 am

welcome to the...
Online Listings

WORLD CLASS VICTORIA WATERFRONT

Central Saanich, Victoria



508 SENANUS DRIVE - \$2,150,000

Bathrooms: 3
Bedrooms: 4
Floor Area:

- World class setting
- Deeo water moorage
- Boathouse
- Almost 1 acre
- Private

Waterfront with a dock and boat house on protected Saanich Inlet. Close to an acre of private out of this world waterfront. Crystal clear warm waters excellent diving. Original west coast home with hand carved fireplace totem pole, and beams. Huge windows and skylights,blending the natural breathtaking surroundings with interior living.The feeling from the

kitchen window is like being on a yacht. This is one of the Peninsulas' most desirable waterfront locations just 25 mins from downtown Victoria. One-of-kind private & tranquil property with incredible views! Its magical.



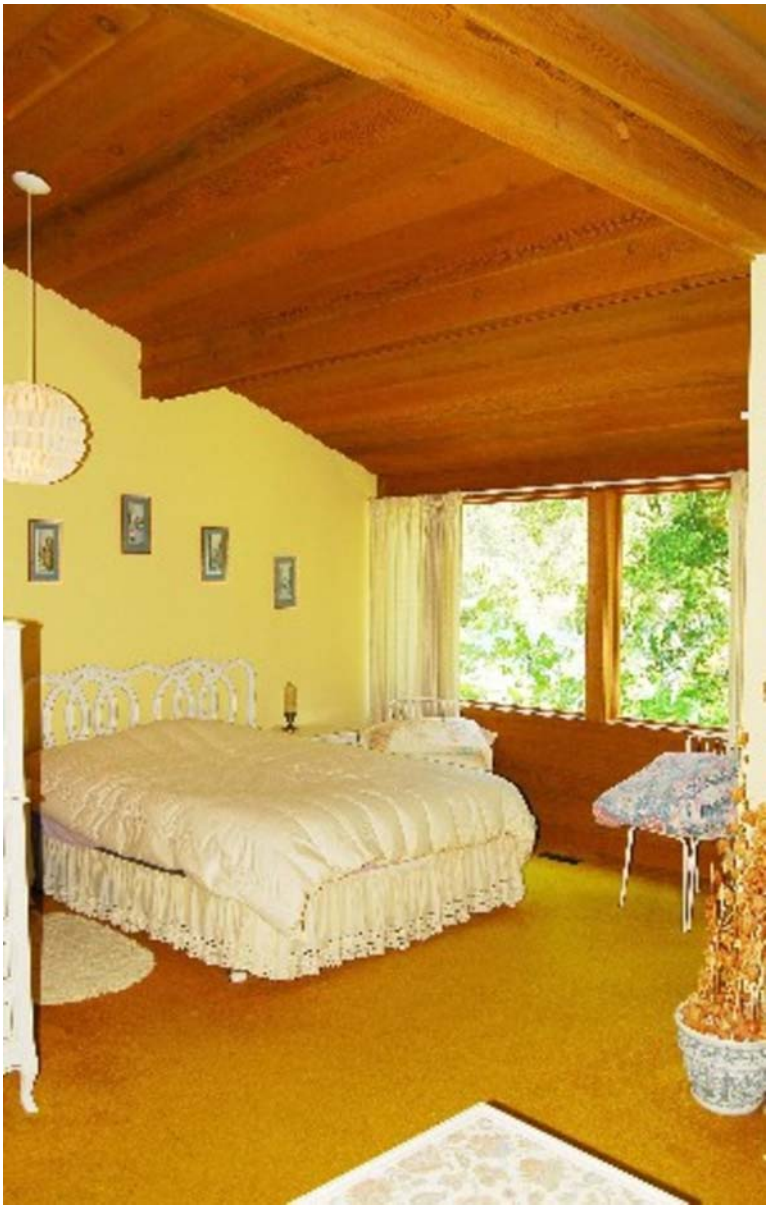
















[contact Tim & Georgia](#) [send to a friend](#) [click for road map](#)

[listings](#) - [meet Tim & Georgia](#) - [recent sales](#) - [retirement in Victoria](#)
[contact Tim & Georgia](#) - [how we sell your home](#)

[top of page](#)



Tim Wiggins - 🇨🇦 - 604-351-1920
Georgia Wiggins - 🇨🇦 - 250-415-2500
RE/MAX Camosun
4440 Chatterton Way
Victoria, BC, Canada, V8X 5J2
office 🇨🇦 - 250-744-3301 fax 250-477-1600

Web Design, Development & Maintenance by
JonathanDay.com

669 page views since Jun 14, 2008
© 2001-2008 TimWiggins.com and Affiliates. Copying without permission is illegal.